

Lower Stillaguamish PIC Phase III

Regional Priority	SHELL1.11: Develop and implement local and tribal pollution identification and correction (PIC) programs		
Approach	Snohomish County		
Owner Organization	Washington State Department of Health		
Funders	City of Stanwood, Snohomish Conservation District, Snohomish Health District, Stillaguamish Tribe Of Indians, Washington State Department of Agriculture, Washington State Department of Ecology		
Other Organizations	Sean Edwards (sean.edwards@co.snohomish.wa.us)		
Primary Contact	Planning/Design	Duration	2020 - 2022
Stage	\$300,000.00	Secured Funding	\$300,000.00
Estimated Total Cost	\$0.00	Targeted Funding	\$0.00
No Funding Identified	On-Track		
Activity Progress	Inadequate resources: Funding not fully secured		
Activity Progress Barrier	2018-0958		
2018 NTA ID	\$300,000.00		
Total Proposed NTA Cost			

Address overarching priorities to increase and protect harvestable shellfish acres ➤ Develop and implement local and tribal pollution identification and correction (PIC) programs

Snohomish County will continue working with partner agencies to expand and enhance the Lower Stillaguamish Pollution Identification and Correction (PIC) effort to include additional focus areas for proactive targeted water quality monitoring, pollution source tracking, regulatory compliance coordination, education and outreach, technical assistance, and cost share incentives. This work will help Snohomish County fully implement the Port Susan Pollution Response Plan that the County will adopt and begin implementing in March 2019 as required by the Washington Department of Health due to the 2017 downgrade of 190 acres and 2019 downgrade of 350 acres of the Port Susan shellfish growing area.



A. Stillaguamish River estuary looking north toward Stanwood

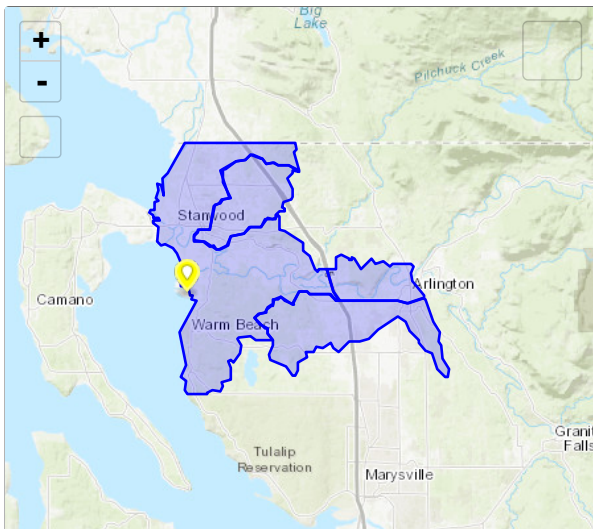
Targeted Puget Sound Recovery Progress Measure

No Expected Accomplishments provided

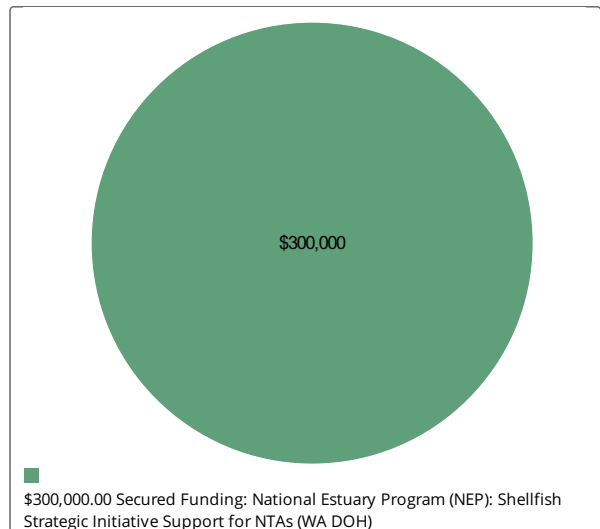
Activity Types

- Behavior Change - Compliance

Location



Budget



Photos

During



F. Lower Stillaguamish PIC Phase 2 presentation at Stillaguamish Shellfish Dinner in Stanwood (11/3/18)



C. Beef Cattle Farmer with Snohomish Conservation District Farm Planner at Silvana Fair (8/8/18)



I. Snohomish Conservation District Lead Farm Planner at Country Living Expo in Stanwood (1/26/19)



J. Snohomish Conservation District Sound Horsekeeping Farm Planner at Warm Beach Camp Horse Farm Tour (3/23/19)