



# Citizen Science and Stewardship of Aquatic Reserves in the Salish Sea

<b>Regional Priority Approach</b>	CHIN4.11: Create open and shared georeferenced clearinghouse of science and monitoring data
<b>Owner Organization</b>	Washington State Department of Natural Resources
<b>Other Organizations</b>	Nisqually Reach Nature Center, Port Townsend Marine Science Center, RE Sources for Sustainable Communities, Vashon Nature Center
<b>Primary Contact</b>	Allison Brownlee (Allison.Brownlee@dnr.wa.gov)
<b>Stage</b>	Implementation
<b>Duration</b>	2019 - 2023
<b>Activity Progress</b>	Off-Track
<b>Activity Progress Barrier</b>	Inadequate resources: Lack of staff resources
<b>2018 NTA ID</b>	2018-0595
<b>Total Proposed NTA Cost</b>	\$620,000.00

**CHIN4: Emphasize funding and implementation of science and monitoring actions to support salmon recovery** ▶  
**CHIN4.11: Create open and shared georeferenced clearinghouse of science and monitoring data**

Citizen Stewardship Committees (CSCs) ([www.aquaticreserves.org](http://www.aquaticreserves.org)) have conducted important baseline monitoring in WA DNR Aquatic Reserves since 2012. While volunteer participation in citizen science projects is strong, the citizen committees lack the resources to manage and share data and to coordinate regionally with other volunteer groups. This NTA expands current monitoring work by building capacity for data sharing and increased citizen science coordination throughout Puget Sound.

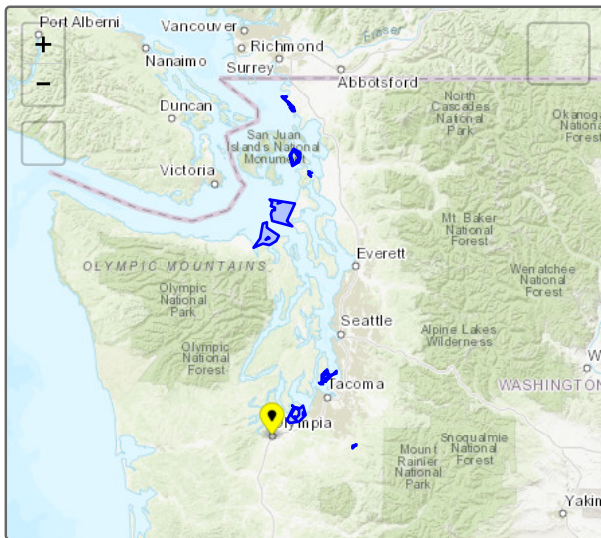
### Activity Types

- Enabling Conditions - Monitoring

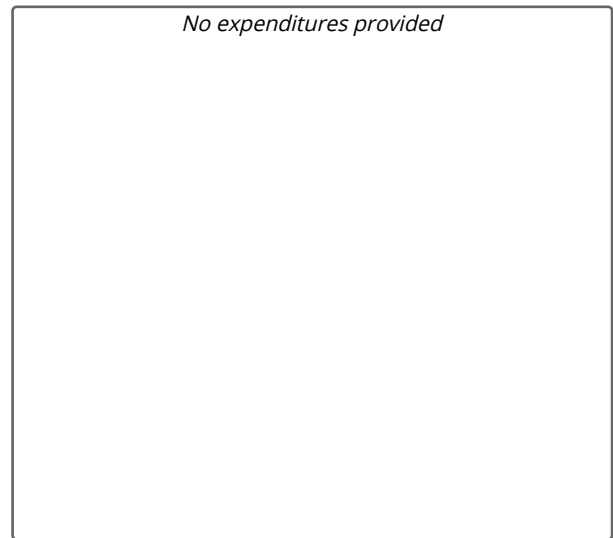


Citizen scientists conduct bird surveys in Cherry Point Aquatic Reserve

### Location



### Expenditures



## Photos

*No additional photos provided*

---

Near Term Action last updated 8/25/2021