



Acquisition and restoration of priorities identified in the Elwha Watershed prioritization

Regional Priority	CHIN7.1: Protect and/or restore critical habitat for salmon populations.
Approach	
Owner Organization	North Olympic Land Trust
Funders	North Olympic Land Trust, Puget Sound Partnership
Other Organizations	Lower Elwha Klallam Tribe, North Olympic Peninsula Lead Entity
Primary Contact	Michele Canale (michele@northolympiclandtrust.org)
Stage	Implementation
Duration	2019 - 2021
Activity Progress	On-Track
Activity Progress Barrier	Inadequate resources: Funding not fully secured
2018 NTA ID	2018-0542
Total Proposed NTA Cost	\$686,135.00

CHIN7: Continue to restore degraded fish habitat, via projects in Lead Entities' four-year work plans > CHIN7.1: Protect and/or restore critical habitat for salmon populations.

In 2016, NOLT and the Lower Elwha Klallam Tribe completed a prioritization of parcels in the Elwha River watershed, including Indian Creek and Little River. The project partners believe that long-term conservation strategies for the Elwha River can be best addressed by protecting the best existing salmon habitat and ecosystem function while identifying and treating limiting factors on private land. Limiting factors include habitat degradation and loss, floodplain modification, channel conditions, riparian conditions, water quality, and biological processes (Habitat Limiting Factors for WRIA 18). In 2019 and 2020, we have partial funding to conserve priorities #4 and #10.

Key Accomplishments

Accomplishments to be provided upon completion of Near Term Action

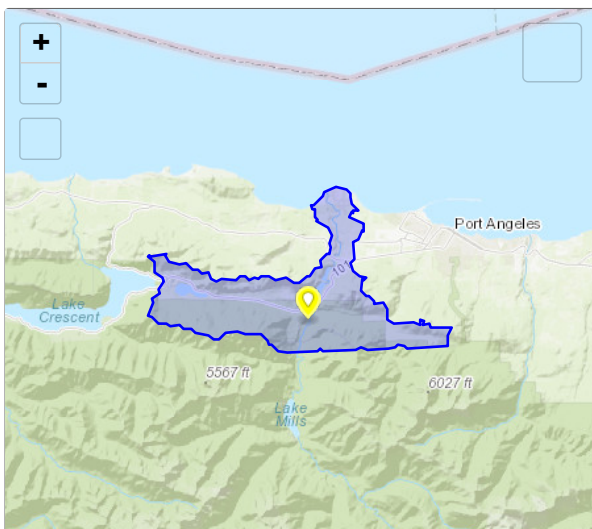
Activity Types

- Enabling Conditions - Protection

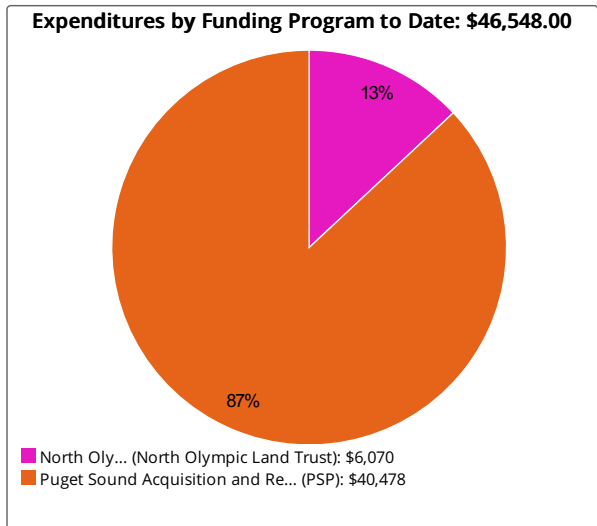


Elwha River, Large Woody Debris 3.3.18

Location



Expenditures



Photos

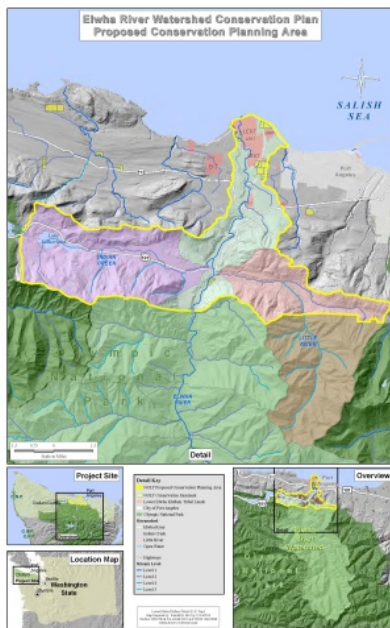
Before



Elwha River and its floodplain 3.3.15



Floodplain Habitat on the Elwha River 3.3.15



Planning Area