

# The Economic Benefits of the Southern Resident Killer Whales

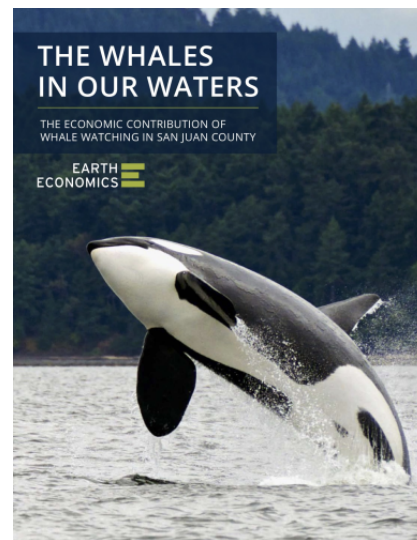
<b>Regional Priority Approach</b>	CHIN4.3: Improve knowledge for management of Chinook salmon and steelhead and tracking recovery
<b>Owner Organization</b>	Earth Economics
<b>Funders</b>	SeaDoc Society
<b>Primary Contact</b>	Maya Kocian (mkocian@eartheconomics.org)
<b>Stage</b>	Completed
<b>Duration</b>	2018 - 2019
<b>Activity Progress</b>	On-Track
<b>Activity Progress Barrier</b>	No barrier identified
<b>2018 NTA ID</b>	2018-0527
<b>Total Proposed NTA Cost</b>	\$90,000.00

**CHIN4: Emphasize funding and implementation of science and monitoring actions to support salmon recovery >**  
**CHIN4.3: Improve knowledge for management of Chinook salmon and steelhead and tracking recovery**

Restoration activities needed to prevent the collapse of the Southern Resident Killer Whale (SRKW) population, such as Chinook salmon habitat restoration, are hindered by a lack of funding. Earth Economics proposes a study to quantify the economic contribution of the SRKW population to Washington's state economy, changing the public's and elected officials' understanding of why funding to preserve the SRKW is critical, and drawing a connection between a healthy SRKW population and a healthy economy.

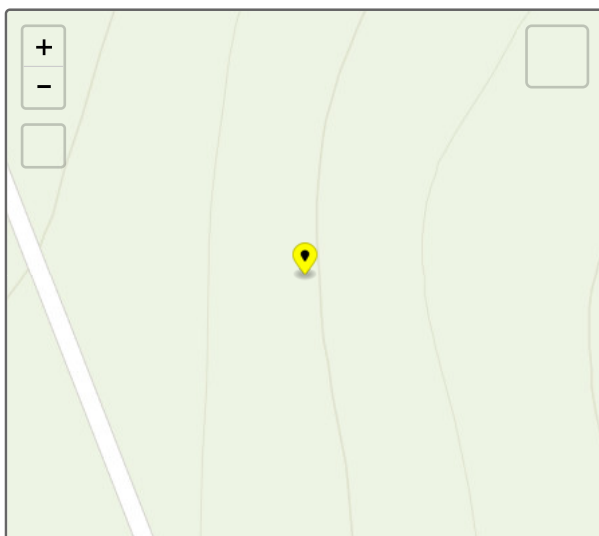
### Activity Types

- Enabling Conditions - Research

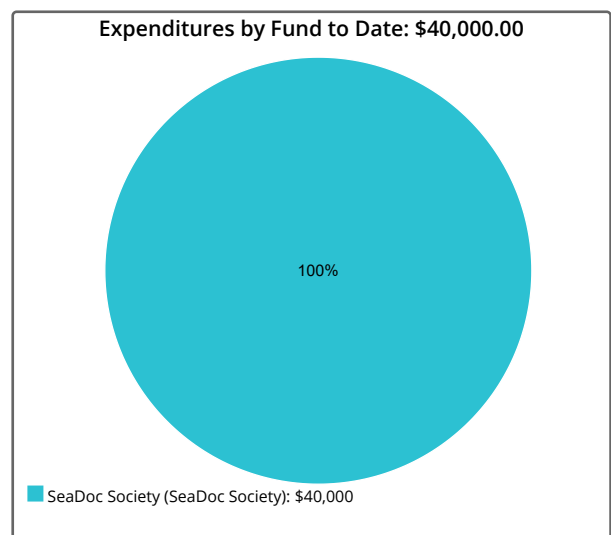


Report Cover

### Location

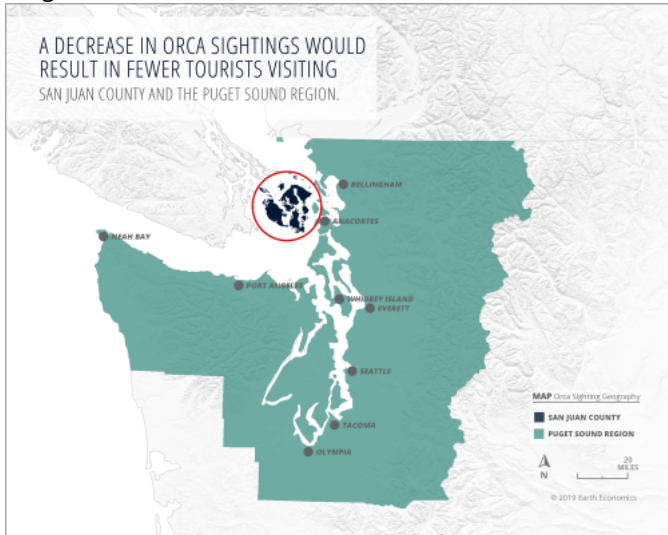


### Expenditures

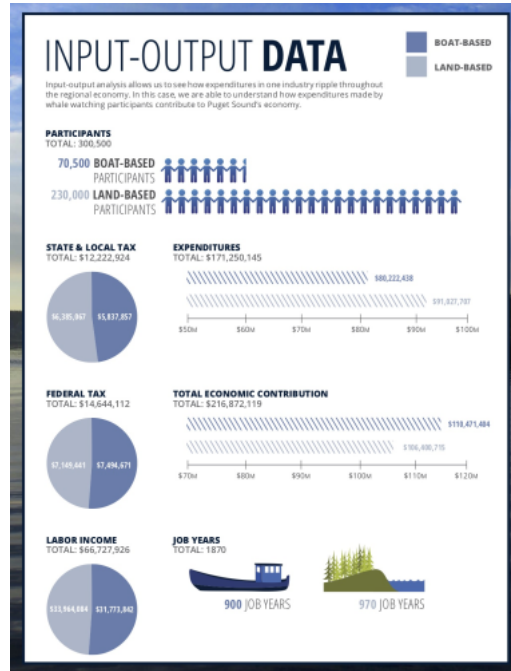


Photos

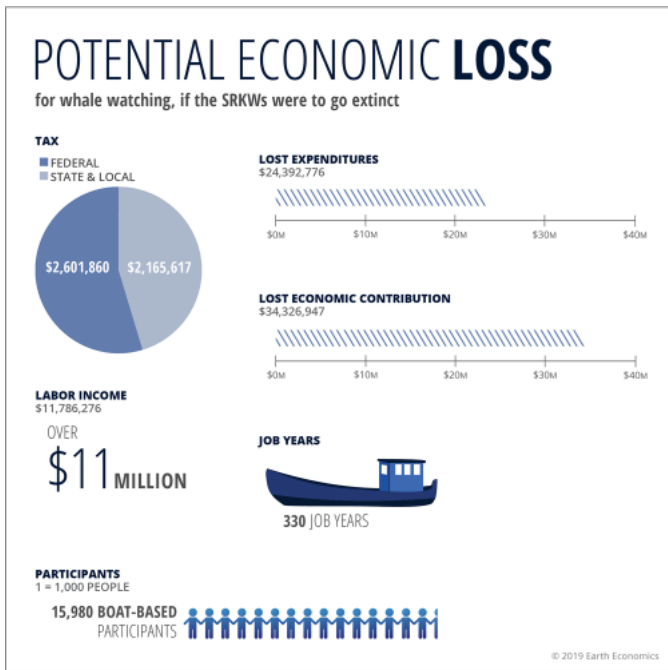
During



Boat and land-based whale watching in San Juan County supported the economy of the entire Puget Sound region.



The economic benefits of boat and land-based whale watching in San Juan County



The estimated economic losses resulting from SRKW extinction in the Puget Sound region.